



North Lebanon Roads Network and Public Transport

Public Transport

Buses: Buses are popular and inexpensive and can be stopped anywhere along the way simply by hailing.

Port : Most shipments carry general goods and dry discharge such as iron, wood, and sugar, various kinds of beans, iron scrap, vehicles, and construction material.

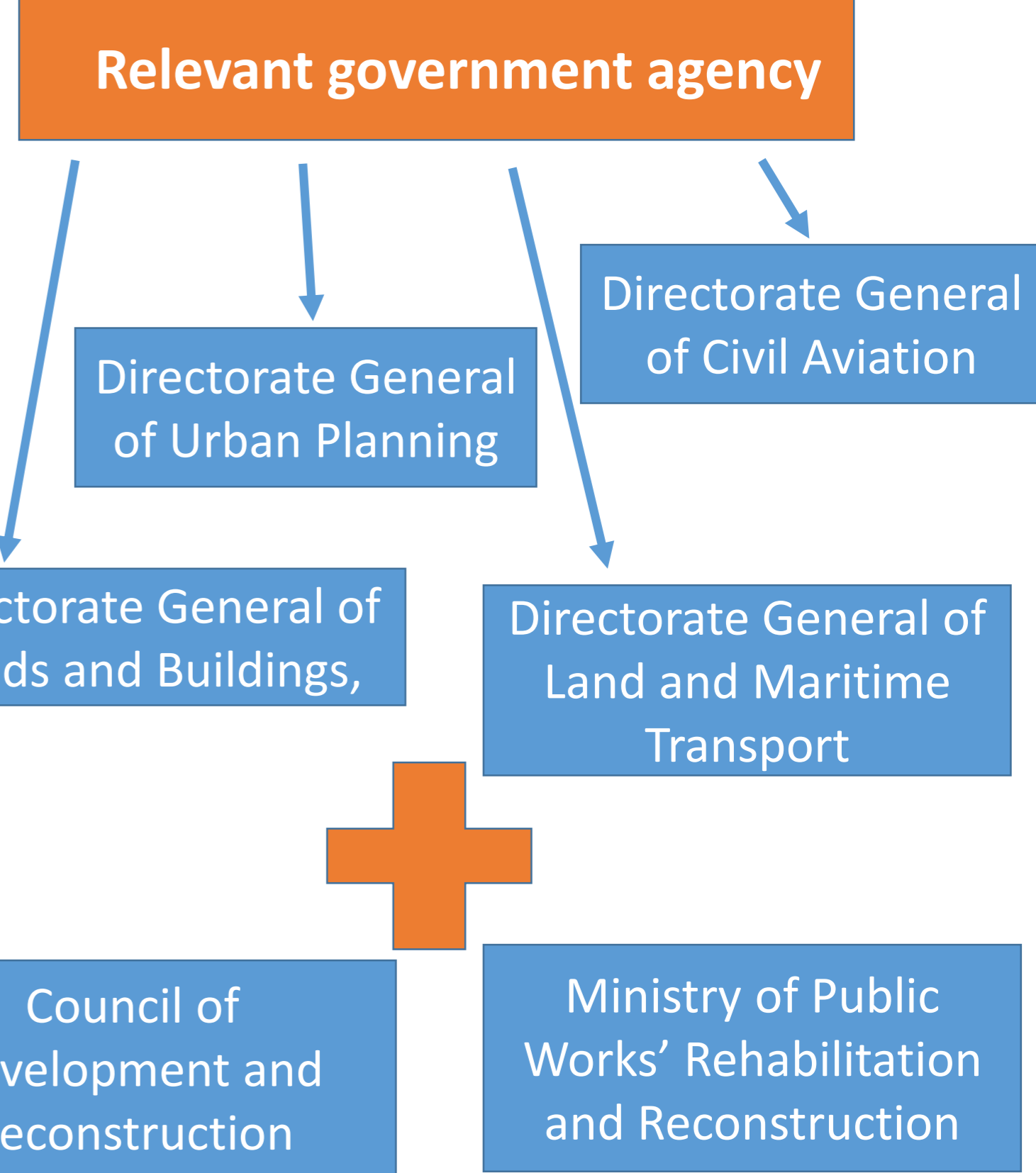
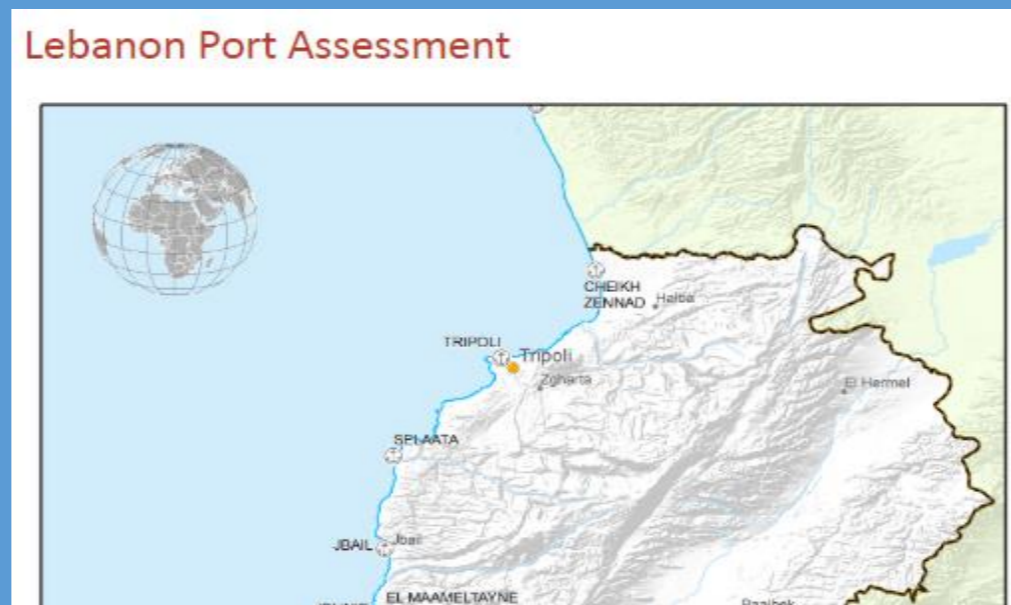
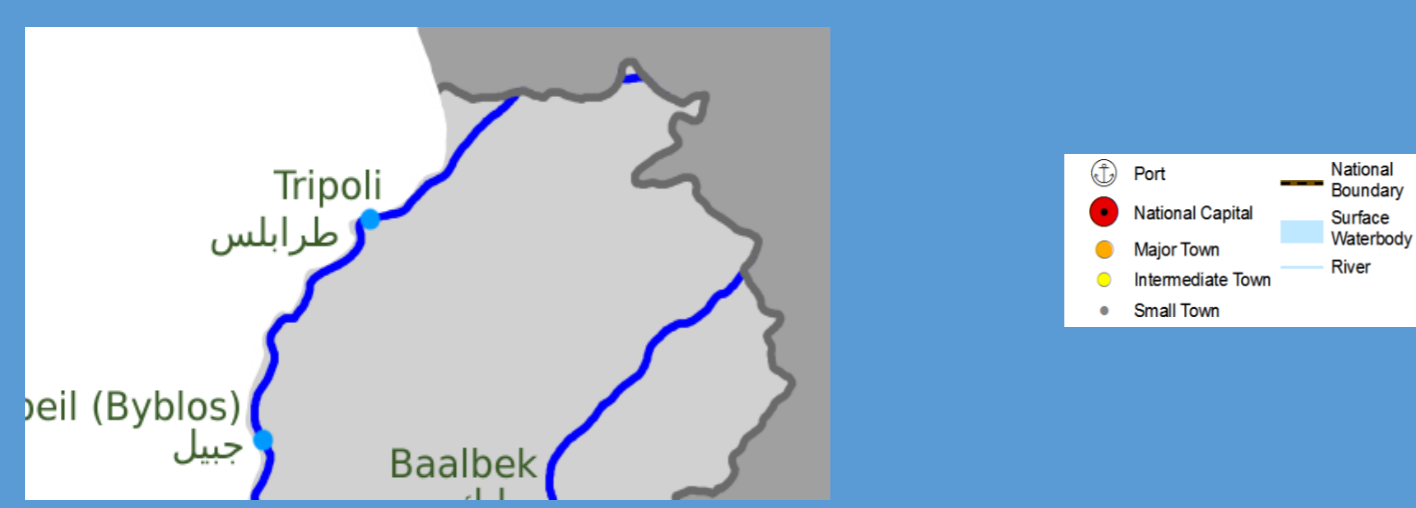
Ferries: The Port of Tripoli (Lebanon) is also a port of entry and ferries usually come from Taşucu, Turkey

Taxis and services: Service-taxis/ Traditional Taxi /Online services /On-call taxis
Carpooling

Airport : Rene Mouawad Air Base formerly and still sometimes known as Kleyate Airport used to be a military-civil joint airport in northern Lebanon. To date, however, nothing has come of these plans, and restoration of the airport has not yet begun.

Cable Car: No cable car (telepherique) in north Lebanon.

Rail transport: The Lebanese rail system is not currently in use, with services having ceased due to the country's political difficulties.



Tripoli Projects

PRESENT CONDITIONS AND PROBLEMS

Road Network and Road Space Utilization
Roads are mostly narrow
Road space is not fully used for traffic purpose due to heavy on-street parking.
There is no room for road widening or construction.

Inter-City Buses
There is no off-street inter-city bus terminal.
Inter-city buses wait for passengers on a road until enough passengers boarded on it.
On-street inter-city bus terminals are concentrated along the busiest roads.

Taxis
There is no off-street taxi terminal stand. Taxis are parking on streets to get 4 or 5 passengers.
Over-supply of taxi service is obvious.
Taxis are concentrated at Public Garden and J. Abd El-Nasser Square areas.

On-Street Parking
Many vehicles park along streets, narrowing a road space for travel way.

One-way Traffic Operation
One-way traffic operation is being extensively adopted in the most of areas.
Environmental Condition : Due to concentration of traffic, its slow moving conditions, and many old-age vehicles, air quality is seriously deteriorated.

Factors affecting Tourism Development
Historical and cultural heritages are concentrated in the old city area. Proper parking areas, improvement of sidewalks and pedestrian roads and beatification of area are needed to attract more tourists.

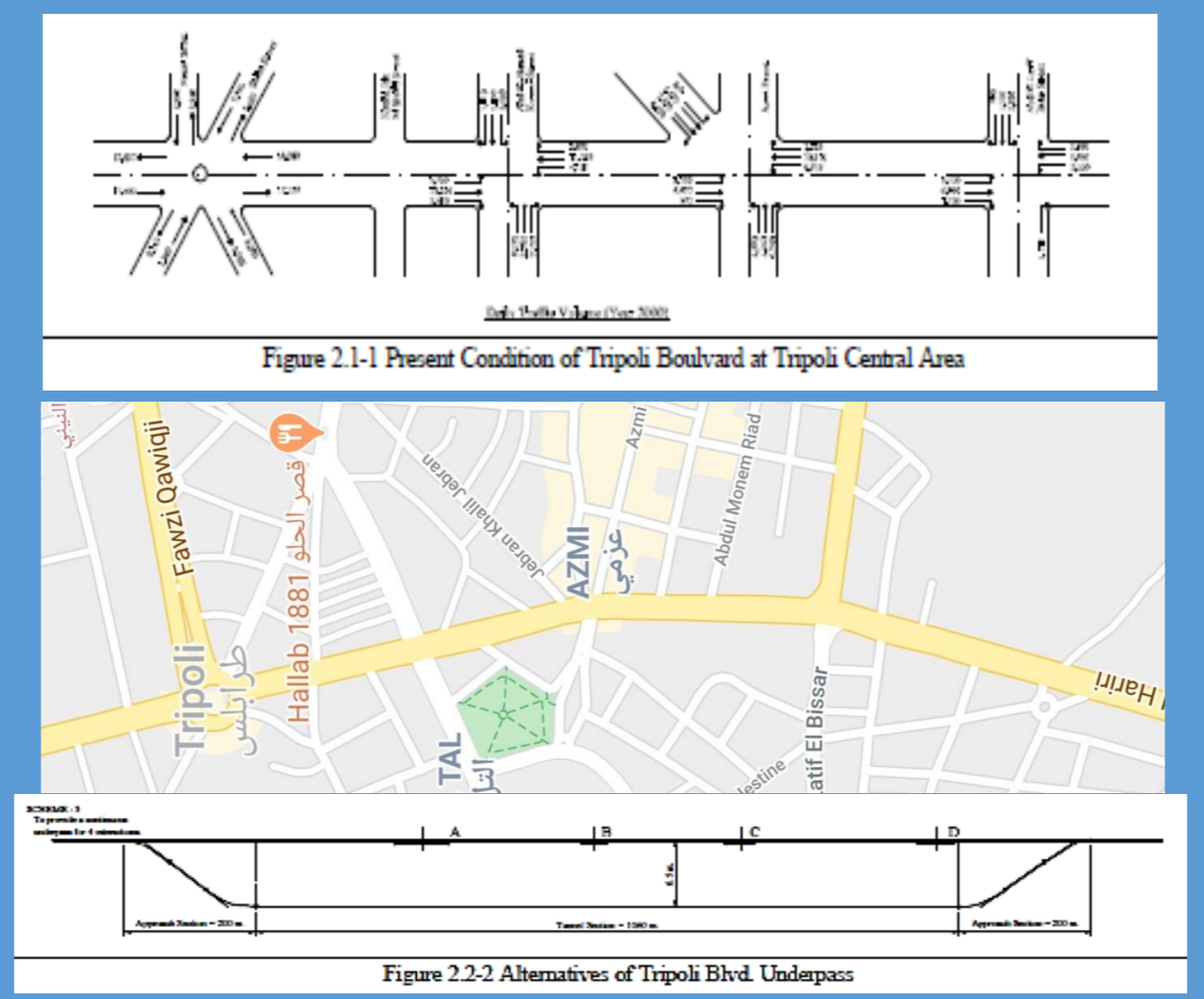
Roads and highways, completed and ongoing projects



Roads and highways under preparation projects



Tripoli boulevard underpass project



CENTRAL TRIPOLI TRANSPORT MANAGEMENT PROJECT

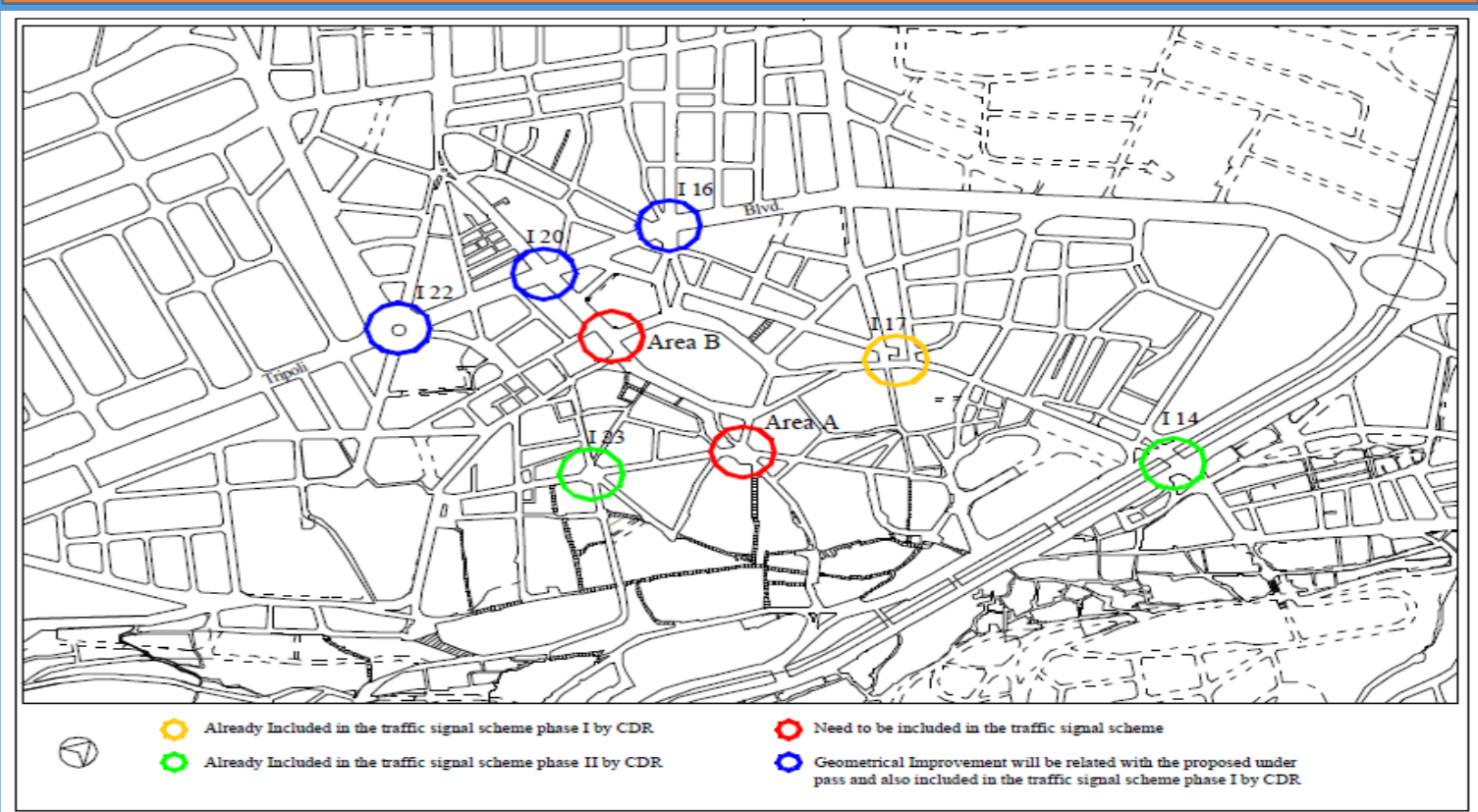
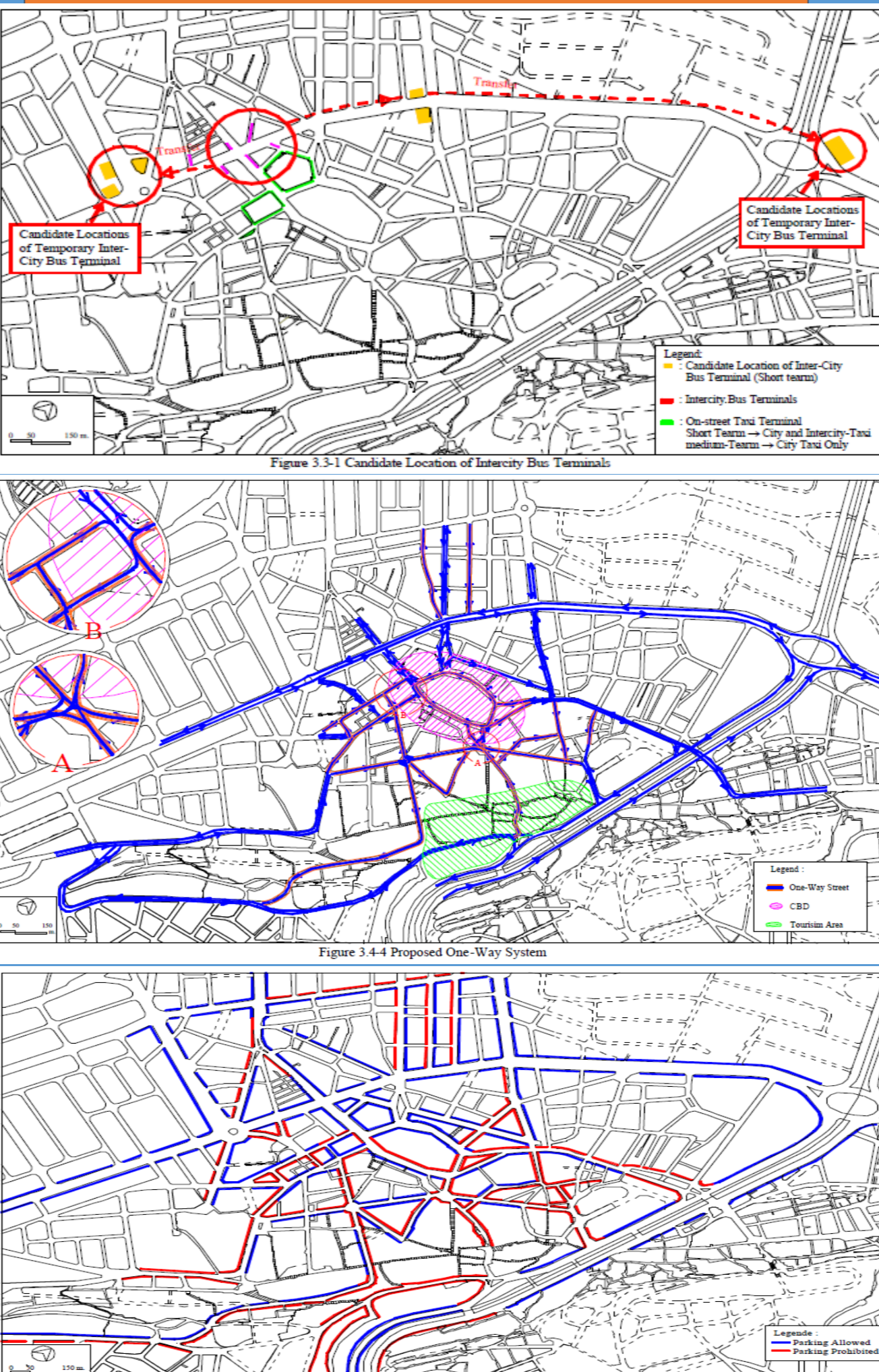


Table 3.7-2 Sidewalk Conditions

Condition	Area (m ²)	Ratio
Good	8,000	10 %
Fair	32,000	40 %
Bad	40,000	50 %

Table 3.7-3 Pavement Conditions

Condition	Area m ²	Ratio %
Good	30,000	7.5
Fair	360,000	90.0
Bad	10,000	2.5